

EXETER STREET



NASHWATSON
beautifully imperfect since 2009

A three bedroom terraced house over three floors. Convenient for Stanford school and Brighton Station. The ground floor has an open plan living and dining room that accesses the kitchen. The rear patio, garden is accessed from the kitchen. There are three bedrooms and a bathroom on the two upper levels.

A really warm, authentic home that retains period features, and provides a great backdrop for a modern day interpretation.

Stylish,
private
and
versatile..

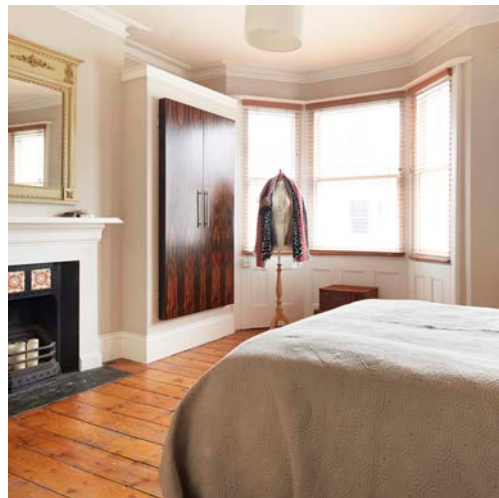
NASHWATSON

beautifully imperfect since 2009



NASHWATSON
beautifully imperfect since 2009

Exeter Street

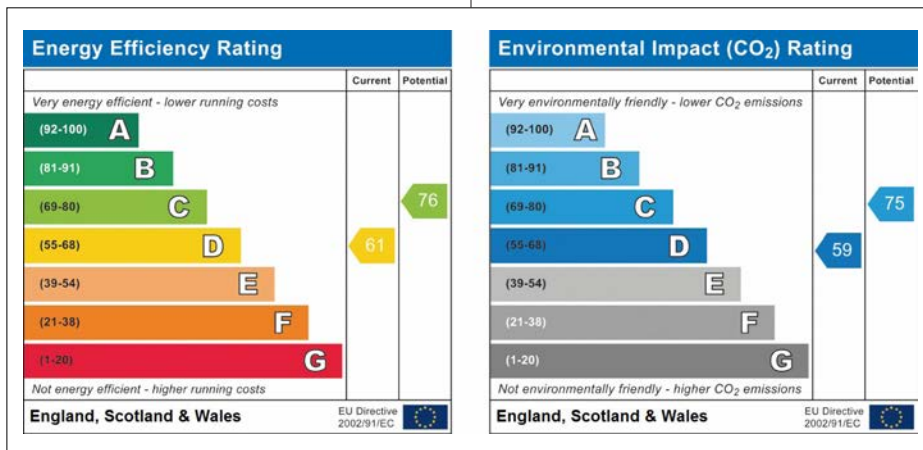
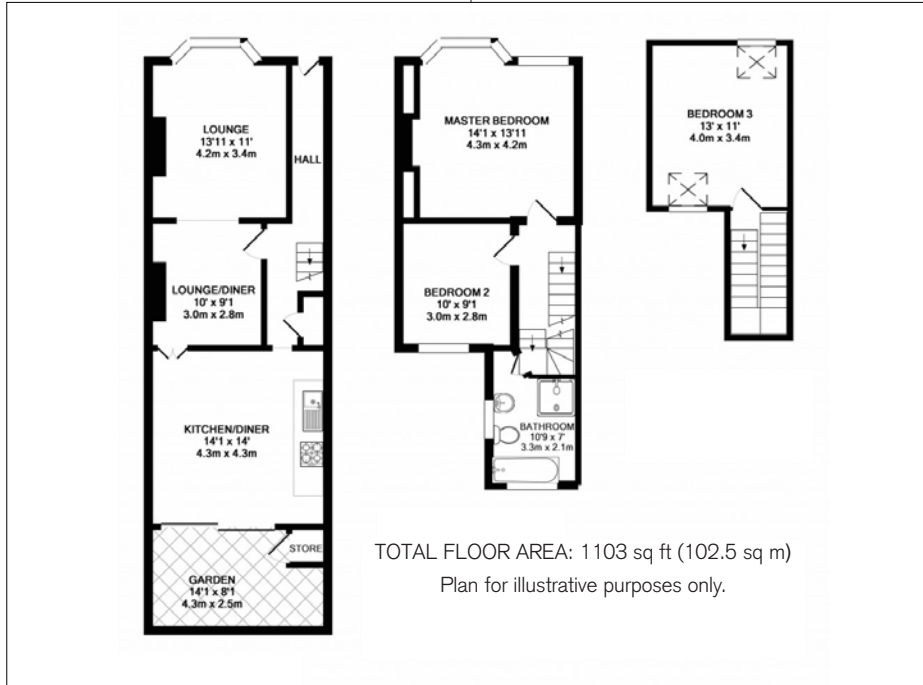


The particulars we have prepared in this brochure are just a guide. No survey has been carried out and room sizes are approximate. Whilst we take reasonable care to ensure its accuracy, we cannot guarantee this and do not supply any warranty or representation of any kind in relation to the content herein.

NASH WATSON
 69 A&B CHURCH ROAD
 HOVE
 BN3 2BB
 01273 733 500
 HOME@NASHWATSON.COM

EXETER STREET

HOUSE 3 BEDROOMS



ENERGY PERFORMANCE GRAPH..

The particulars we have prepared in this brochure are just a guide. No survey has been carried out and room sizes are approximate. Whilst we take reasonable care to ensure its accuracy, we cannot guarantee this and do not supply any warranty or representation of any kind in relation to the content herein.

Our redress scheme is The Property Ombudsman www.tpos.co.uk Nash Watson Ltd have client money protection insurance provided by Client Money Protect Membership number: CMP003294 www.clientmoneyprotect.co.uk

Nash Watson Ltd trading as 'Nash Watson' is a company registered in England. Registration number: 6913269. Registered Offices: (no correspondence please) 23 St Leonards Road, Bexhill On Sea, East Sussex, TN40 1HH.

