

# BRUNSWICK SQUARE



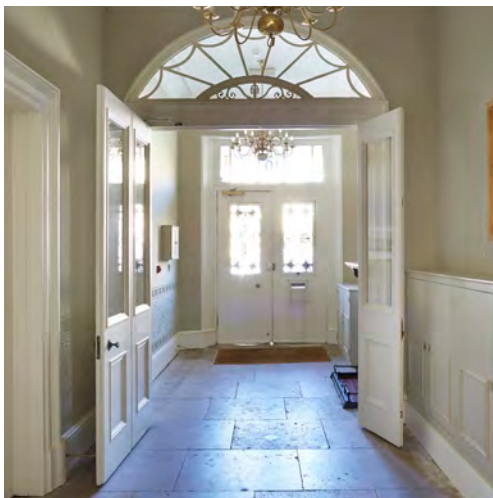
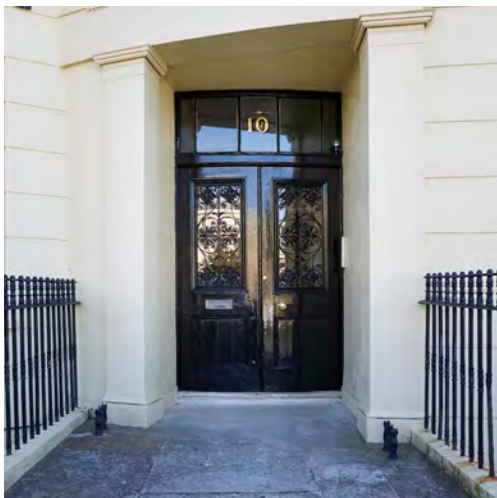
# Beautiful sash windows and rooftop views..

Set inside a Grade I Listed Regency Town House, a one-bedroom fourth floor rear apartment. Located in the iconic Brunswick Square, close to Hove seafront. The apartment has a 20ft open plan living-kitchen room, an 18ft bedroom, and there's a bathroom. This is a charming top floor apartment that retains the characterful features found in Regency properties. Beautiful sash windows, rooftop views and a great address.

Brunswick Square is a beautiful, Regency architectural set-piece. The gardens form the centrepiece and provide the perfect backdrop to draw inspiration from the southerly sea view. Graceful, elegant, inspirational and essential viewing.

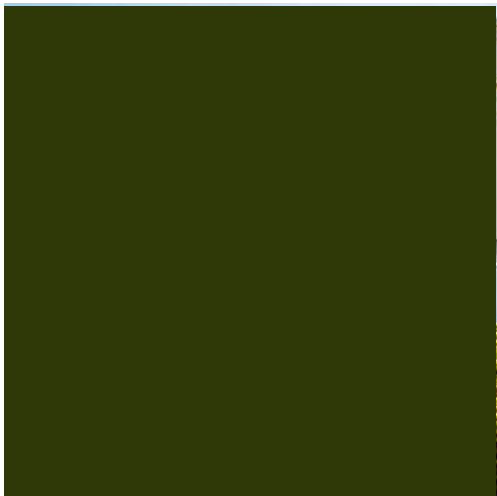
NASHWATSON

beautifully imperfect since 2009



NASHWATSON  
 beautifully imperfect since 2009

Brunswick Square

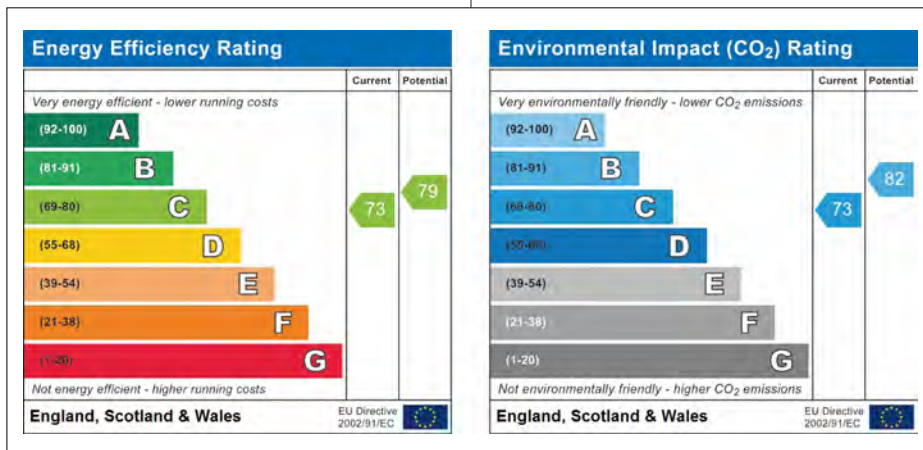
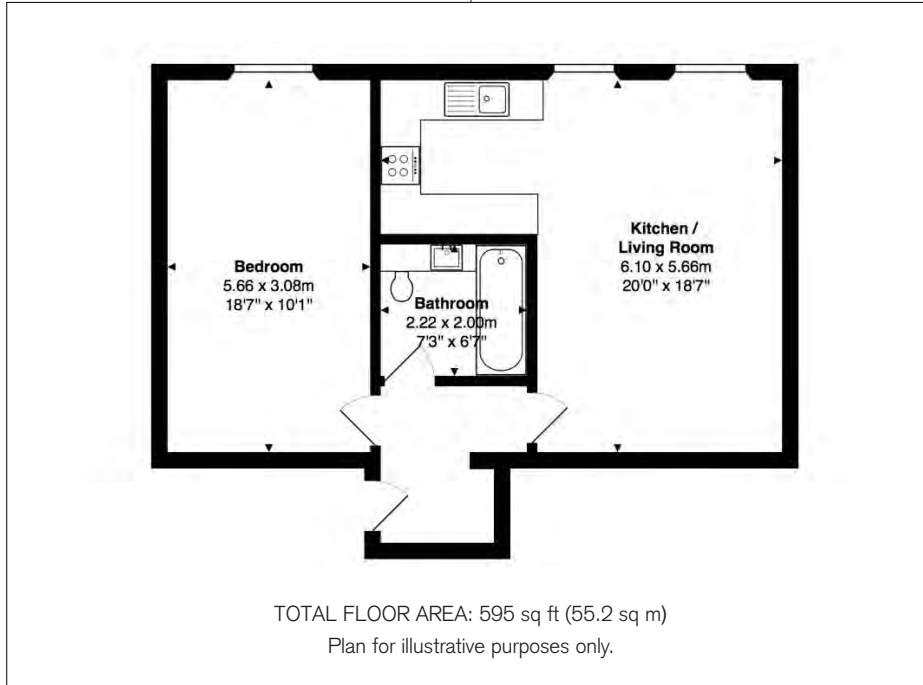


The particulars we have prepared in this brochure are just a guide. No survey has been carried out and room sizes are approximate. Whilst we take reasonable care to ensure its accuracy, we cannot guarantee this and do not supply any warranty or representation of any kind in relation to the content herein.

NASH WATSON  
 BRIGHTON & HOVE  
 01273 733 500  
 HOME@NASHWATSON.COM

BRUNSWICK SQUARE

FLAT 1 BEDROOM



ENERGY PERFORMANCE GRAPH..

The particulars we have prepared in this brochure are just a guide. No survey has been carried out and room sizes are approximate. Whilst we take reasonable care to ensure its accuracy, we cannot guarantee this and do not supply any warranty or representation of any kind in relation to the content herein.

Our redress scheme is The Property Ombudsman [www.tpos.co.uk](http://www.tpos.co.uk) Nash Watson Ltd have client money protection insurance provided by Client Money Protect Membership number: CMP003294 [www.clientmoneyprotect.co.uk](http://www.clientmoneyprotect.co.uk)

Nash Watson Ltd trading as 'Nash Watson' is a company registered in England. Registration number: 6913269. Registered Offices: (no correspondence please) 23 St Leonards Road, Bexhill On Sea, East Sussex, TN40 1HH.

