

NASHWATSON

OSBORNE VILLAS | LET AGREED | £975 pcm



A CHARMING AND CHIC HABITAT..

A one bedroom lower ground floor patio flat close to the sea. The flat has a living room with oak flooring, a modern kitchen with appliances, a master bedroom with built in wardrobes, a bathroom, and an easterly facing patio.

A charming and chic habitat with an outside space, ideally located for Hove seafront and nearby shops, cafes and restaurants.

lettings@nashwatson.com / 01273 733500 / nashwatson.com

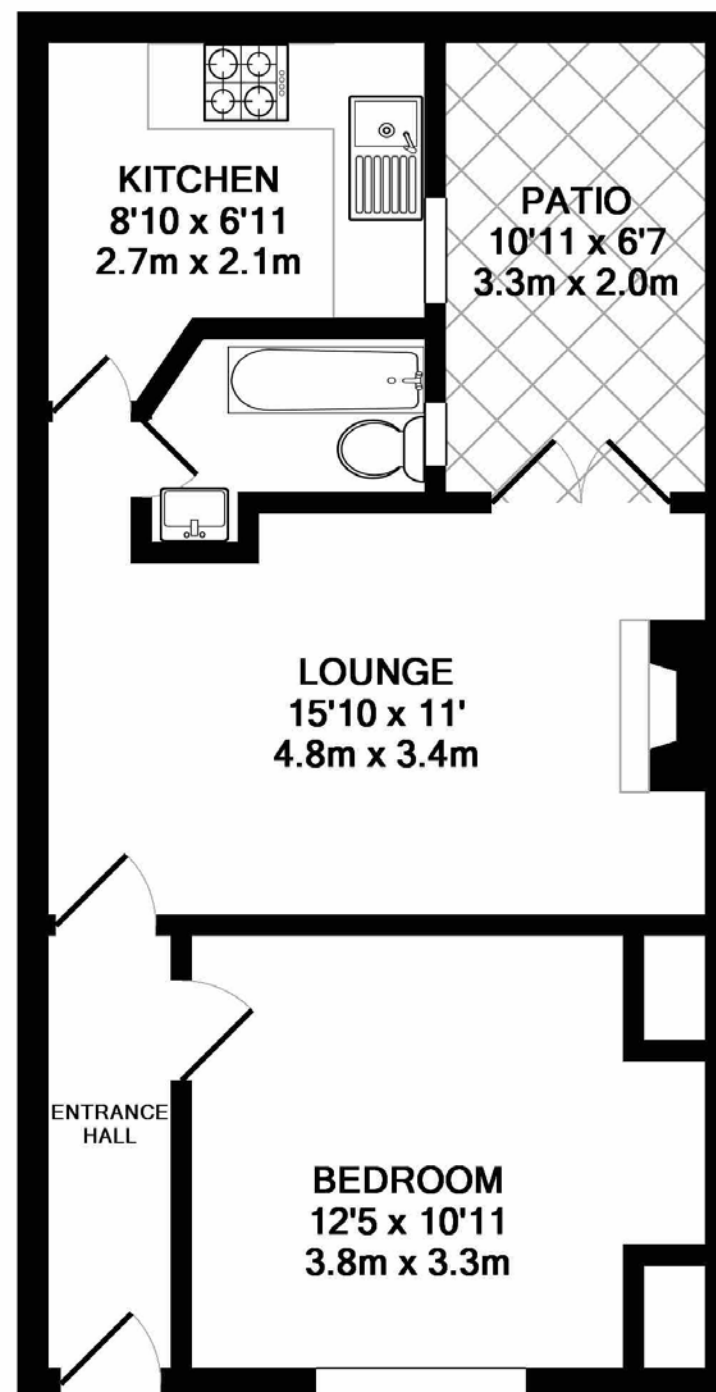
NASHWATSON

OSBORNE VILLAS | LET AGREED | £975 pcm



NASHWATSON

OSBORNE VILLAS | LET AGREED | £975 pcm



APPROX. TOTAL FLOOR AREA: 421 sq ft (39.1 sq m)

Plan for illustrative purposes only.