

NASHWATSON

SOUTHDOWN HOUSE | LET AGREED | £1,300 pcm



MODERN, MINIMALISM WITH CHARACTER IN CENTRAL HOVE..

lettings@nashwatson.com / 01273 733500 / nashwatson.com

NASHWATSON

SOUTHDOWN HOUSE | LET AGREED | £1,300 pcm



NASHWATSON

SOUTHDOWN HOUSE | LET AGREED | £1,300 pcm



Set inside a purpose built complex, a two bedroom first floor apartment located close to St Ann's Well Gardens, Hove. The apartment has a open plan lounge and kitchen, a master bedroom with en-suite, bedroom two and a bathroom. Peripherals include access to a communal roof terrace, a private residents gym, and parking is secure underground for one car. Southdown House, a popular development, provides a private and all inclusive living experience in the centre of Hove.

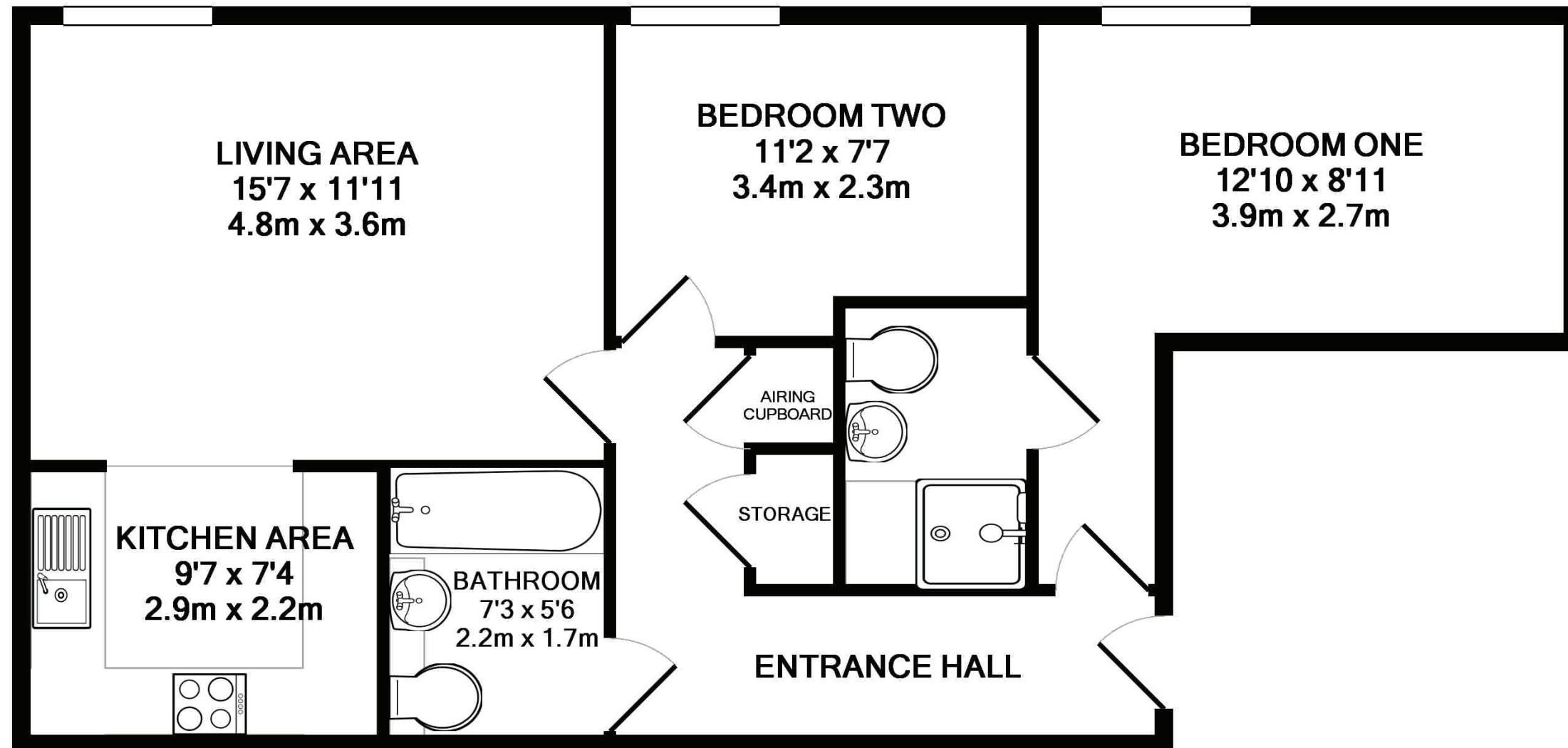
NASHWATSON

SOUTHDOWN HOUSE | LET AGREED | £1,300 pcm



NASHWATSON

SOUTHDOWN HOUSE | LET AGREED | £1,300 pcm



APPROX. TOTAL FLOOR AREA: 676 sq ft (62.8 sq m)

Plan for illustrative purposes only.