

# NASHWATSON

VICTORIA STREET | TO LET | £2,600 pcm

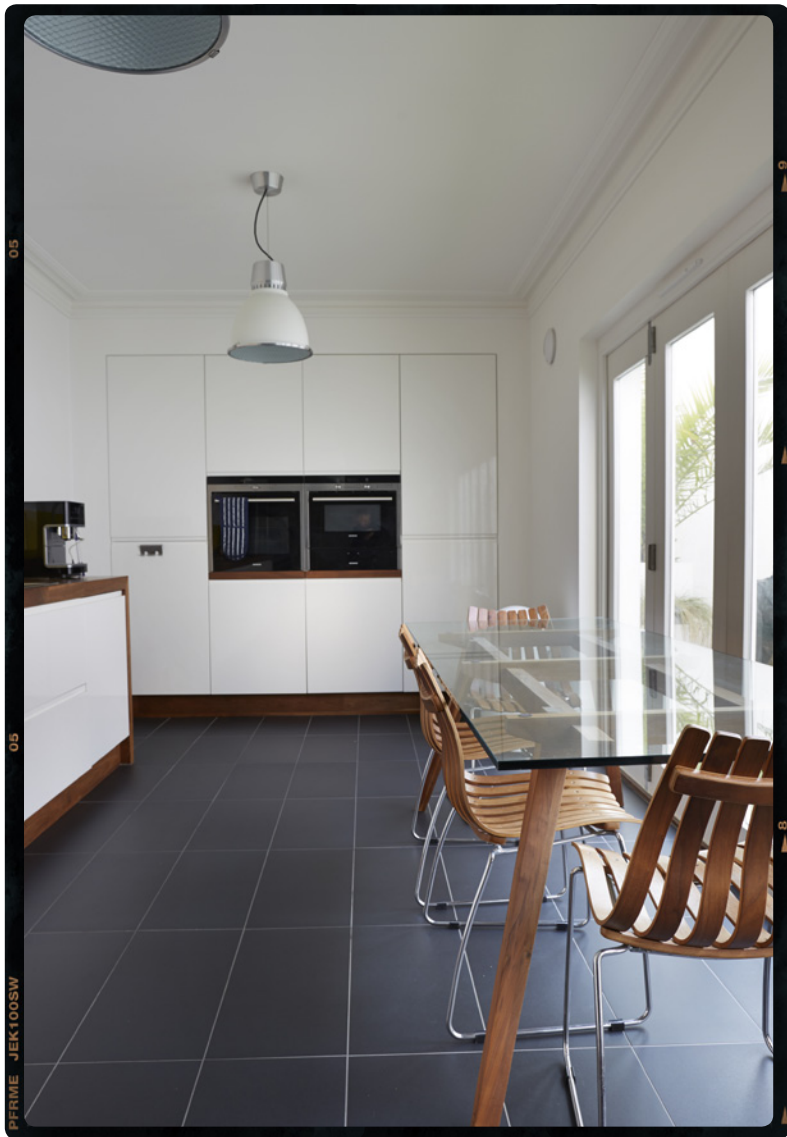


## A DESIRABLE HOME FROM TOP TO BOTTOM..

A three double bedroom Victorian town house set over four floors located in central Brighton. The ground floor has a living room, a 35' open plan kitchen-dining room that accesses the patio and the lower level, and there are three bedrooms - two with en-suite, a study, and a bathroom on the two upper levels. A well thought out living experience from the top to the bottom. Stylish and functional in equal measures. A desirable habitat located in the heart of Brighton.

# NASHWATSON

VICTORIA STREET | TO LET | £2,600 pcm





# NASHWATSON

VICTORIA STREET | TO LET | £2,600 pcm



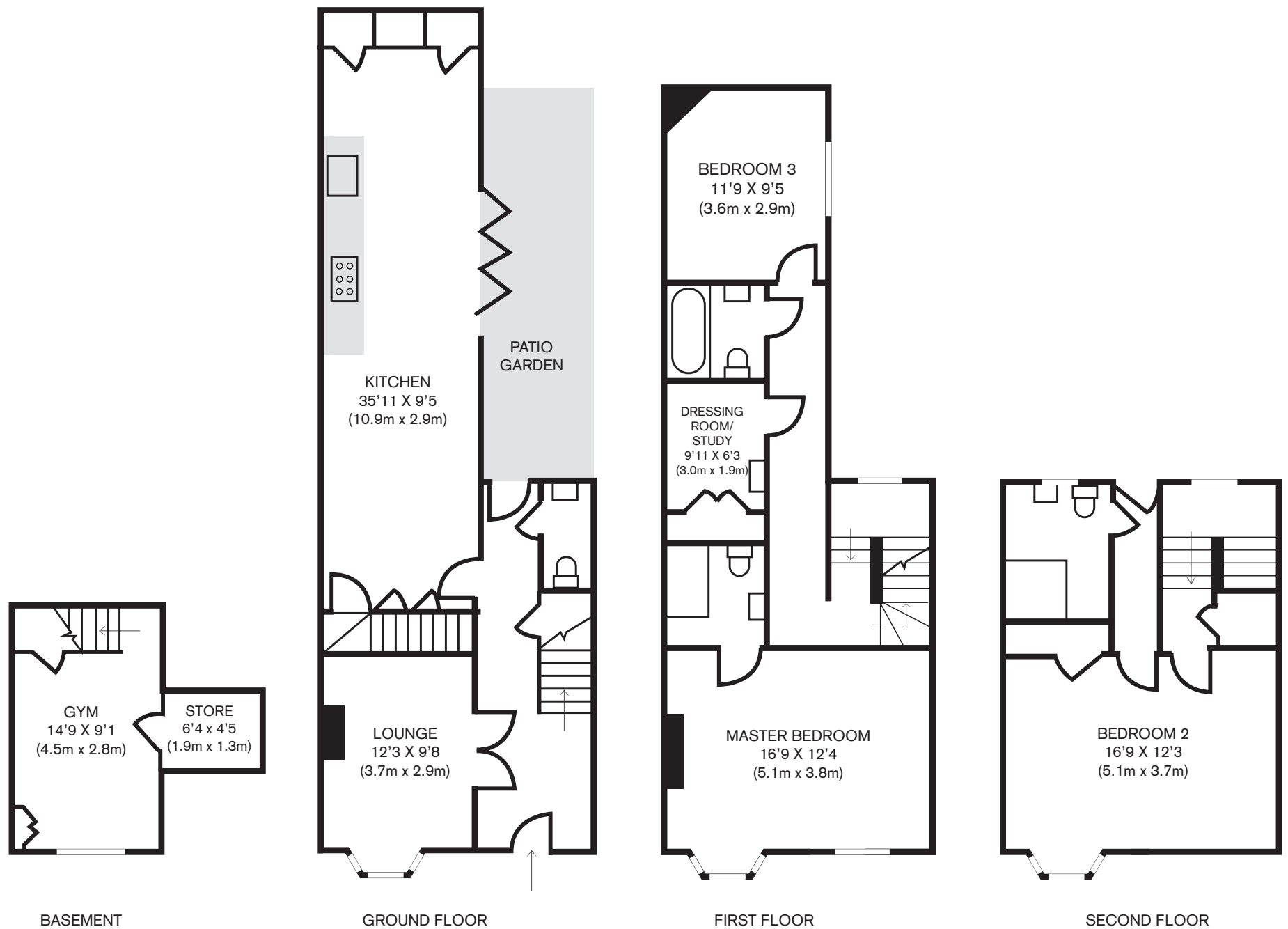
# NASHWATSON

VICTORIA STREET | TO LET | £2,600 pcm



# NASHWATSON

VICTORIA STREET | TO LET | £2,600 pcm



TOTAL FLOOR AREA: 1,838 sq ft (170.8 sq m)

Plan for illustrative purposes only.