

# NASHWATSON

PARK CRESCENT | SOLD STC | OIEO £350,000



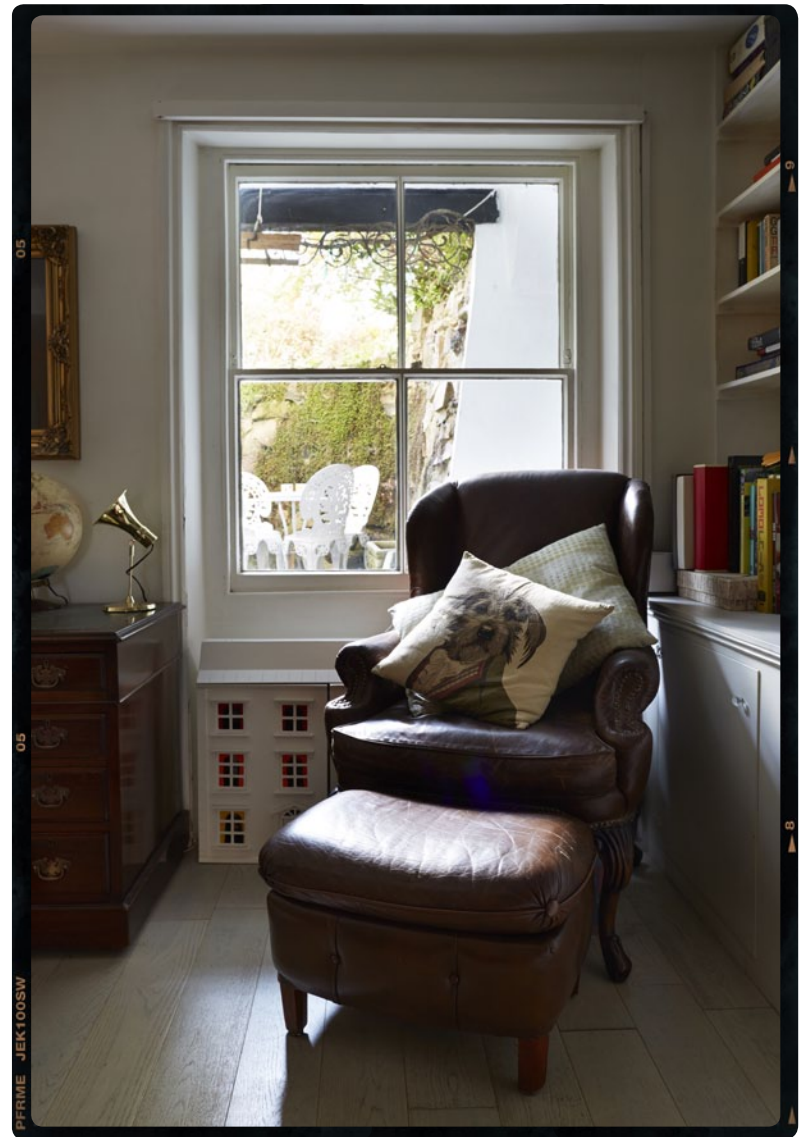
CHIC AND TRANQUIL IN THIS DELIGHTFUL SQUARE..

Set inside this iconic Regency building, a one bedroom third floor easterly facing apartment located close to Hove seafront. The apartment has a living room with a recessed kitchen, a bedroom, a bathroom and cloakroom. A chic, tranquil home, decorated with a tasteful palette overlooking this delightful square.



# NASHWATSON

PARK CRESCENT | SOLD STC | OIEO £350,000





# NASHWATSON

PARK CRESCENT | SOLD STC | OIEO £350,000





# NASHWATSON

PARK CRESCENT | SOLD STC | OIEO £350,000





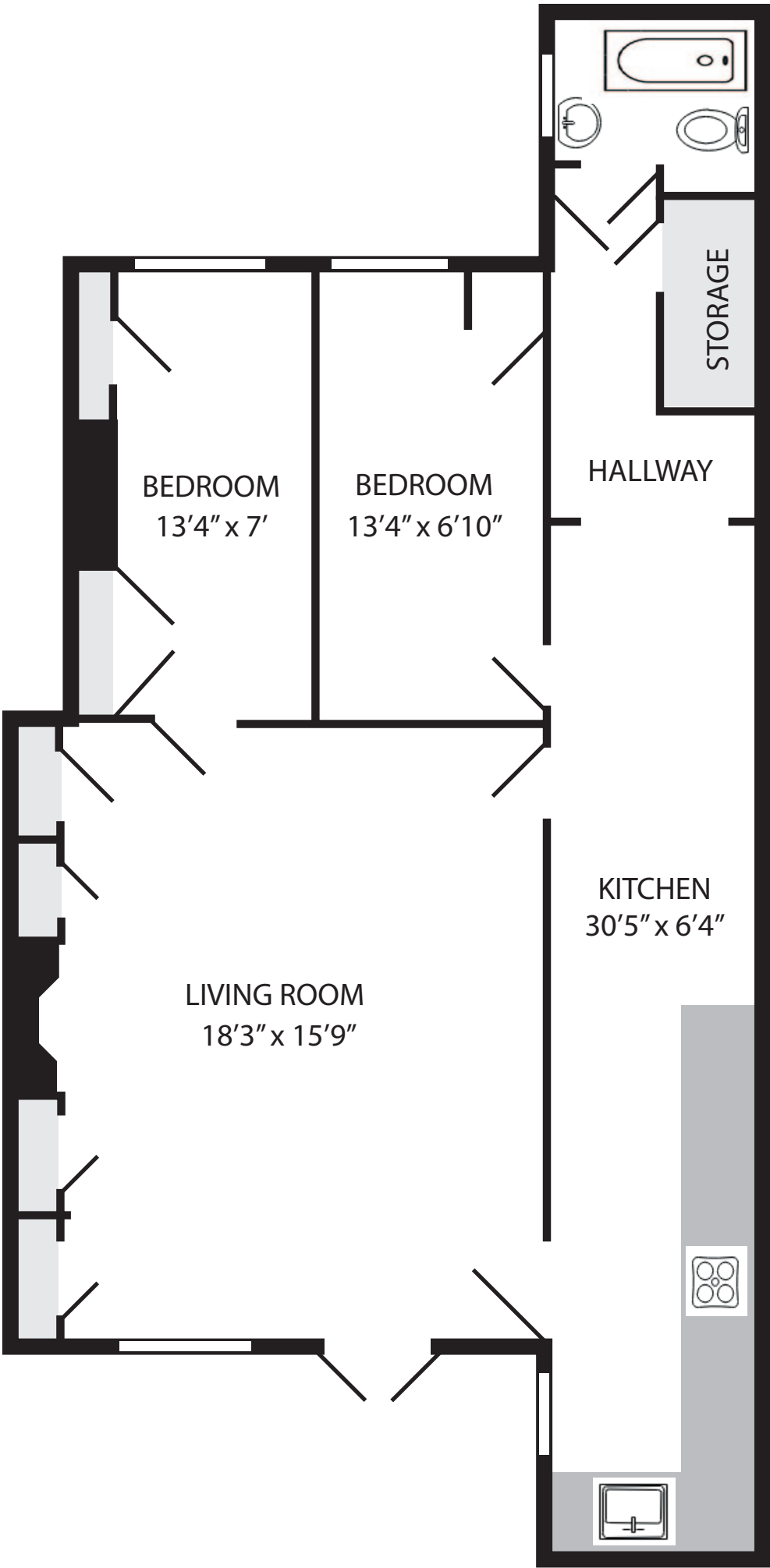
# NASHWATSON

PARK CRESCENT | SOLD STC | OIEO £350,000



# NASHWATSON

PARK CRESCENT | SOLD STC | OIEO £350,000



APPROX. TOTAL FLOOR AREA: 756 sq ft (70.2 sq m)

Plan for illustrative purposes only.