

# NASHWATSON

ORCHARD HOUSE | SOLD STC | £375,000



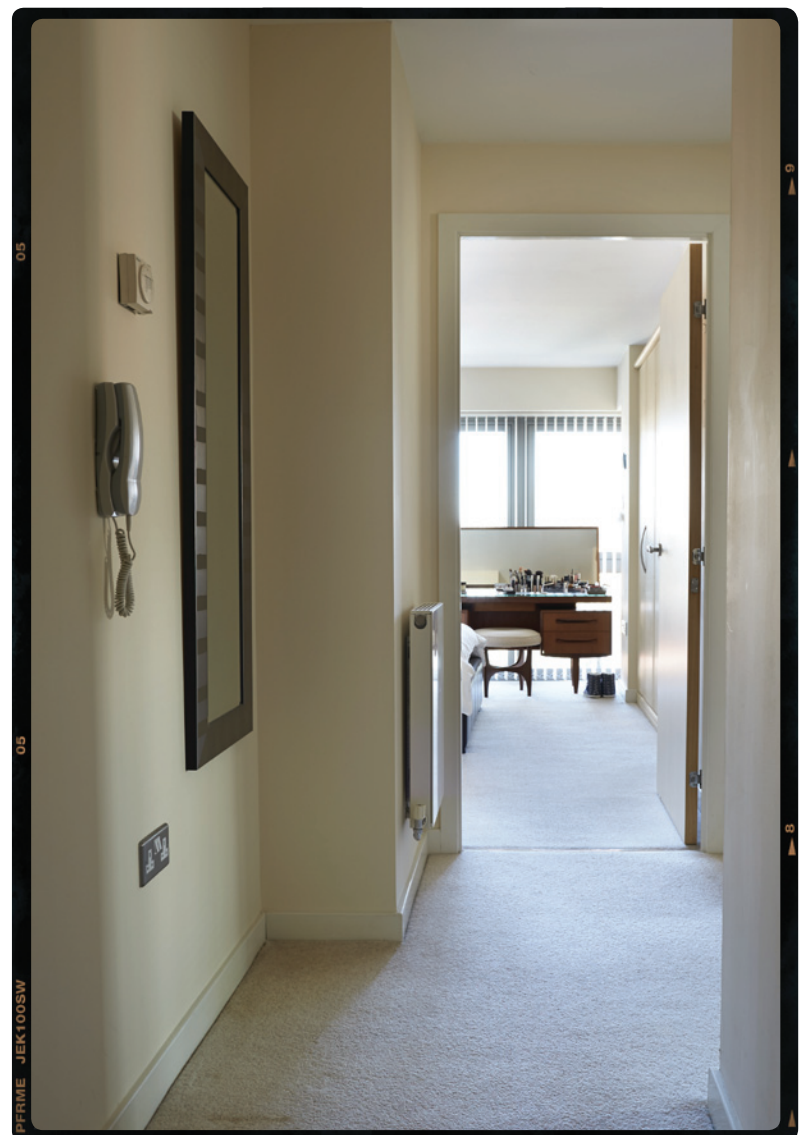
GROWN UP STYLING WITH INSTANT APPEAL..

Orchard House close to Hove Park, Hove. A two bedroom apartment on the second floor. With secure underground parking. The apartment has an open plan living, dining and kitchen room, a master bedroom with en-suite, a second bedroom, and a bathroom. A very uplifting and modern apartment with a good layout. Grown up styling with instant appeal in a great location.



# NASHWATSON

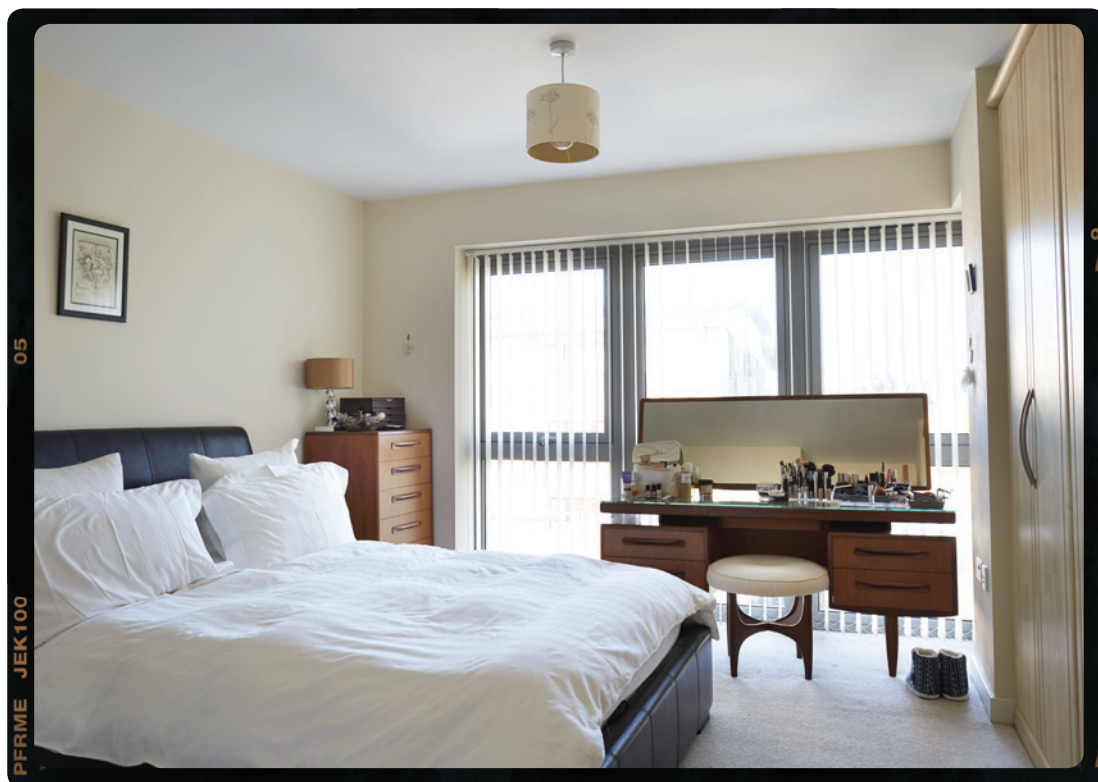
ORCHARD HOUSE | SOLD STC | £375,000





# NASHWATSON

ORCHARD HOUSE | SOLD STC | £375,000





# NASHWATSON

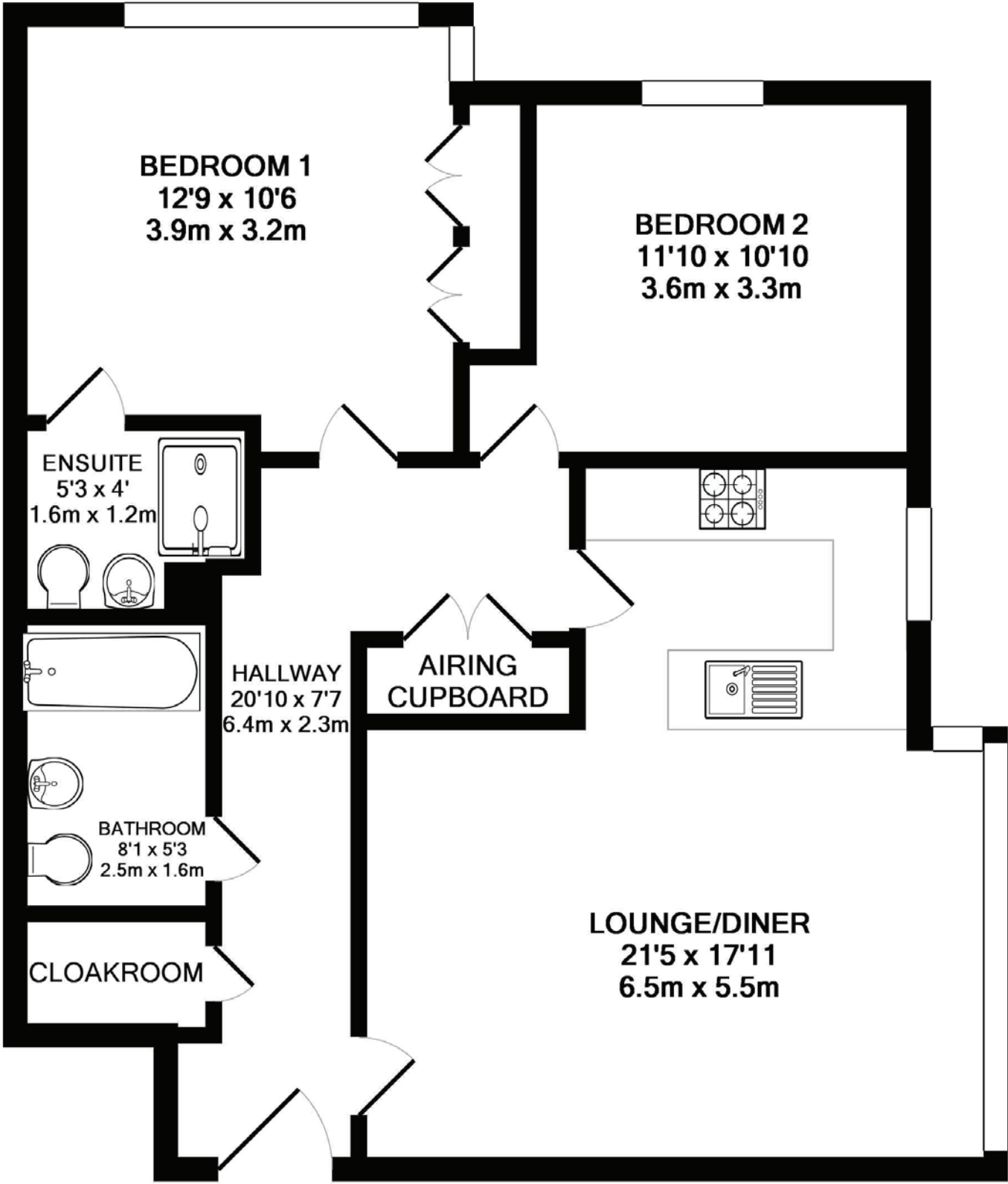
ORCHARD HOUSE | SOLD STC | £375,000





# NASHWATSON

ORCHARD HOUSE | SOLD STC | £375,000



APPROX. TOTAL FLOOR AREA: 883 sq ft (82.0 sq m)  
Plan for illustrative purposes only.