

NASHWATSON

BUCKINGHAM PLACE | SOLD | £995,000



ROMANTIC, CHARACTERFUL AND VERY DESIRABLE...

home@nashwatson.com / 01273 733500 / nashwatson.com

NASHWATSON

BUCKINGHAM PLACE | SOLD | £995,000



A Victorian Villa over five floors in Seven Dials, Brighton. The basement has three small rooms and the lower ground floor has a self contained studio flat. The ground floor has a living room that connects to the kitchen through an open archway, and there is a cloakroom. The first floor has three bedrooms and a bathroom, and there are two bedrooms on the upper level.

The first thing that connects when you enter on the ground floor is the beautiful staircase; this really is the heart of the house and sets the tone throughout. The living room has a period fireplace and two full length sash windows that lead out to a balcony. The kitchen is spacious and, in terms of décor, in harmony with the unique styling that consistently weaves throughout the Villa. The master bedroom has a genuine edge and inspires the true romantic with a nod to a bygone era.

NASHWATSON

BUCKINGHAM PLACE | SOLD | £995,000



As a whole this house is ready for the next incarnation; at this junction the important foundations are present and there is more than enough range to indulge and express. Outside there are gardens to the front and rear and there is a driveway and a garage.

NASHWATSON

BUCKINGHAM PLACE | SOLD | £995,000

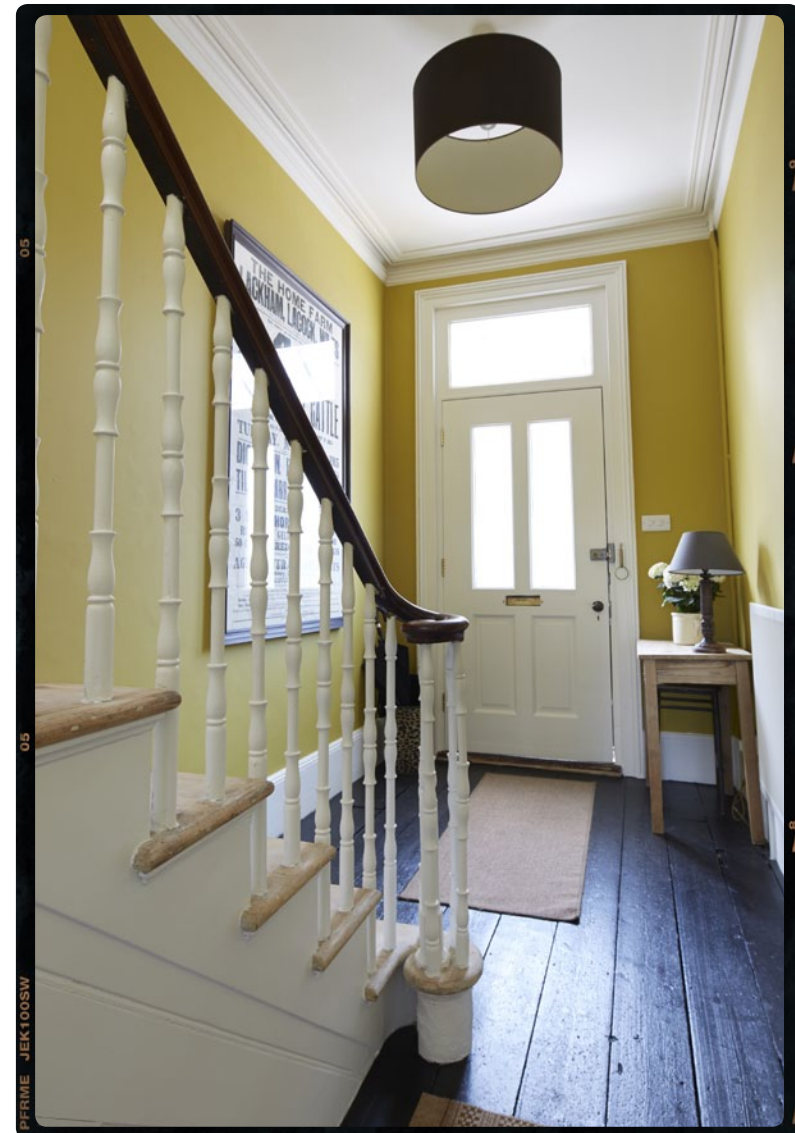


A BEAUTIFULLY RAW VILLA WITH GENUINE PRESENCE IN A GREAT LOCATION..

home@nashwatson.com / 01273 733500 / nashwatson.com

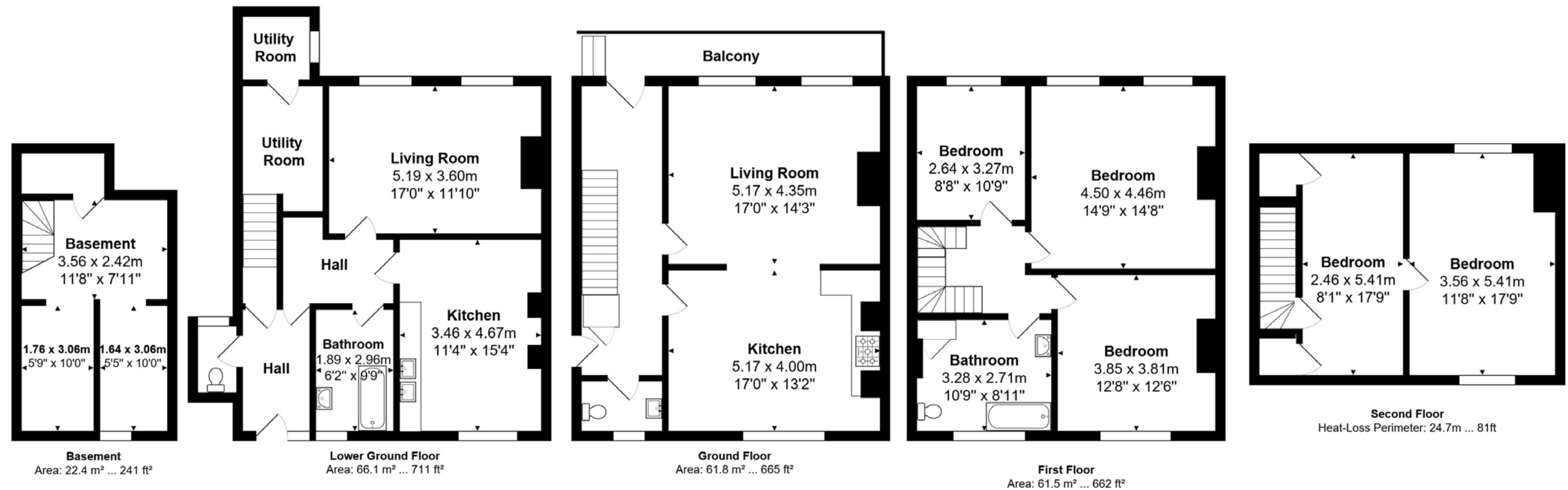
NASHWATSON

BUCKINGHAM PLACE | SOLD | £995,000



NASHWATSON

BUCKINGHAM PLACE | SOLD | £995,000



TOTAL FLOOR AREA: 2,701 sq ft (250.9 sq m)

Plan for illustrative purposes only.